

site update



Olympic Park progress

- Olympic Stadium 'bowl' preparation is making good progress and is on schedule for construction to start earlier than originally planned. Approx 50,000 cubic metres of soil are being dug from the Stadium site per week.
- Over 1.3 million tonnes of soil on the Olympic Park needs to be cleaned of contamination including petrol, oil, tar and heavy metals such as arsenic and lead. 96 per cent of the site has already been investigated.
- An additional soil washing machine has been installed, bringing the total to four machines operational across the park, with a fifth being commissioned. These machines wash, sieve and shake the contamination out of the soil
- 56 per cent of the site has been cleared, and demolition is 75 per cent complete. The 'big five' venue sites- the Olympic Stadium, Aquatics Centre, VeloPark, International Broadcast Centre/Main Press Centre and Athletes Village- are now clear of buildings, and 166 buildings in total across the site have been demolished.
- A high-tech soil laboratory has been set up on the Olympic Park site to help clean up the 2.5 km square site, much of which has been contaminated through decades of industrial use.



Soil samples being tested in the on-site lab

Olympic Park Workforce

- Tessa Jowell officially opened the new Plant Training Centre on the Olympic Park site at the launch of the ODA employment and skills strategy
- Figures show that over one in ten of the current Olympic Park workforce was previously unemployed before finding work helping deliver the Games
- Over a third of these workers live locally. In total local residents make up a fifth of the current workforce of 2,275

Sustainability

- Over 90 per cent of demolition materials being recycled or re-used
- Reclaimed materials stored to be re-used in design of venues and parklands
- A small nature reserve is being created near the northern perimeter of the Olympic Park, along the banks of the River Lea at East Marsh. The 10,000sq m area will become home to a variety of wildlife.
- Additional habitat space created in the Waterworks Nature Reserve near Leyton, east London.
- Recycled four complete buildings and cladding from a fifth to be re-assembled off site.



Temporary bridge on the Olympic Park

Olympic Park site

- The Olympic Park site is 2.5sq km (246 hectares), equivalent in size to Hyde Park.
- The Park is a complex landscape, criss-crossed by pylons, waterways and rail lines.
- It is an area of former heavy industrial use and is contaminated in parts.
- There are 8.35km of waterways within or adjacent to the Olympic Park, many of which will be restored or revitalised.
- This area of low quality and largely inaccessible land will be transformed into one of the largest urban parks to be built in Europe for 150 years.
- More than 30 bridges, temporary and permanent, and 20km of roads to be built in and around the Park in total.
- New transport links in and around the Park transforming the area from one of the worst connected to one of the best connected in the capital with transport links to rival Waterloo.
- Ten rail lines will serve the Olympic Park including upgrades to the DLR, Stratford Regional Station, and the introduction of the Javelin® service to speed passengers from St Pancras to Stratford in seven minutes.
- Cycling and walking routes in and around the Park will be enhanced.

Transport

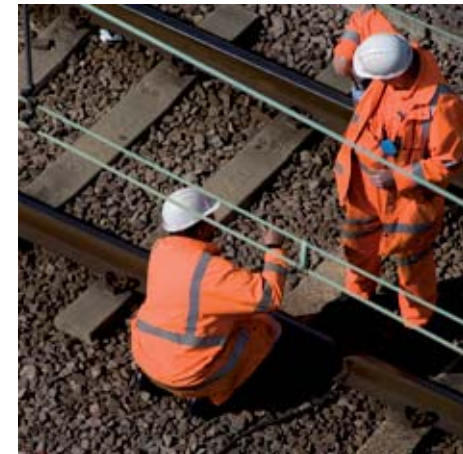
- The Transport Plan for the London 2012 Games published outlining achievements, works in progress and future plans being delivered to transform transport links across the Lower Lea Valley.
- Twelve new railway sidings are being constructed at Orient Way just outside the north-east boundary of the Olympic Park, allowing an existing set of sidings in the heart of the Park to be removed in summer 2008, unlocking the area to become a key logistics site for the construction of the Olympic Stadium and Aquatics Centre.
- Five kilometres of track will be installed to form the new sidings at Orient Way, covering the equivalent area to 3 full-size Football pitches. Work began in September to clear the Orient Way site ready for the construction of the new sidings.
- Second phase of works to upgrade Stratford Regional Station successfully completed on time over the Christmas period. Works included the demolition of redundant station buildings and the extension of a station subway to improve accessibility and increased capacity for passengers.

Utilities and infrastructure

- The latest designs for the Olympic Park Energy Centre have been unveiled, with sustainable energy and green fuels at the forefront of the plans. The Energy Centre will be built in the west of the Park, providing an efficient power, heating and cooling system across the site for the Games and for the new buildings and communities that will develop after 2012.
- The designs for a primary electrical substation to be built in the same area have been revealed following planning permission being secured. The substation will supply electricity to the area in Games-time and in legacy.



Olympic Stadium bowl takes shape



Work being carried out on Stratford Regional Station



The site for the new Energy Centre

Venues:

Olympic Stadium

- The Olympic Stadium design utilises an innovative bowl for the track and permanent lower tiers of seating. The stadium bowl and site is being dug at a rate of over 50,000 cubic metres a week.
- Preparation to dig out the 'bowl' of the Olympic Stadium is on schedule and construction is likely to commence two to three months early.
- The venue will combine the high-level performance needed for a major sports event alongside the long-term needs of the community.

Olympic Village

- Demolition is complete on the Olympic Village site.

Aquatics Centre

- Work to rebuild the river walls is progressing with more than 550 metres completed.
- Award of the construction contract scheduled for early this year with construction due to start in summer 2008.

International Broadcast Centre/Main Press Centre (IBC/MPC)

- Around 9,000 cubic metres of soil has been taken away from the site to prepare the platform for the construction of IBC/MPC. This is being used to raise the ground level at Eton Manor in the north of the Park which will host Paralympic Archery and Wheelchair Tennis.
- Appointment of a developer is scheduled for early this year.

Eton Manor

- Site is a key logistics centre and a strategic entrance at the north part of the site for contractors.
- A shortlist of teams has been announced to design the facilities and venues for three different modes – Olympic Games, Paralympic Games and legacy.

Velodrome and BMX Circuit

- A 35 tonne recycling machine is sifting and sorting 70,000 cubic metres of industrial and domestic rubbish from under the VeloPark and Olympic Village sites. It is separating and sorting up to 500 tonnes of waste a day into piles of glass, metal, concrete, soil and other materials to be reused on site or recycled off site.
- A shortlist has been announced for the construction contract.



Olympic Stadium bowl being 'cut' into the ground



The Aquatics Centre site



Earth being moved around the Velodrome site

Milestones to Beijing 2008

Milestone 01 Changing the face of the earth

The majority of the Olympic Park will be cleared and cleaned.

Milestone 02 Going underground

With the tunnels and cabling complete, the power for the Olympic Park will be set to switch underground.

Milestone 03 Construction access all areas

The main temporary roads and bridges will have been built, giving access to a safe and secure construction site for the big build in 2008.

Milestone 04 Making connections

The installation of new water and energy systems that will serve the Olympic Park during and after the London 2012 Games will have started.

Milestone 05 Setting the scenery

The regeneration of the waterways in the Olympic Park will have started, improving the environment and access for the construction phase.

Milestone 06 Green light for transport

The transport enhancements that will open up east London and support the London 2012 Games will have started, with many complete.

Milestone 07 Route to the Olympic Stadium

Construction will have started on the bridge that will take people over the Aquatics Centre to the Olympic Stadium. Building work on the Stadium will be about to begin.

Milestone 08 Beds for athletes, homes for Londoners

Construction on the Olympic Village will have started.

Milestone 09 Grand designs

Contracts will have been let and designs agreed for the 'Big 4' venues in the Olympic Park, including the Olympic Stadium

Milestone 10 Thinking of tomorrow today

The development of the Legacy Masterplan Framework for the Olympic Park will be well advanced.

Project Phases

Planning

Set-up on site, finalisation of site masterplan and acquisition of land.

'Demolish, Dig, Design'

Cleaning and clearing of the Olympic Park site, platforms prepared for the construction of new venues and infrastructure, key bridges and roads constructed and designs finalised for key venues and infrastructure.

The Big Build

Construction starts on new world-class venues and infrastructure in the Olympic Park.

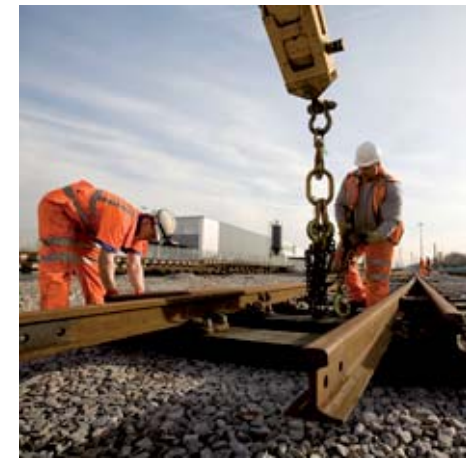
Test Events in 2011

Test events at venues within the Olympic Park to be staged before the Games start.

Olympic and Paralympic Games in 2012

Legacy conversion of Olympic Park and venues

Work begins to dismantle or move temporary venues and infrastructure, and to convert the Olympic Park site for its legacy uses.



Transport improvements being carried out



Olympic Park site being cleaned and cleared

Funders

The construction of the venues and infrastructure for the London 2012 Games is funded by the National Lottery, the Department for Culture, Media and Sport, the Mayor of London and the London Development Agency.

The official Emblems and font of London 2012 are © London Organising Committee of the Olympic Games and Paralympic Games Limited (LOCOG) 2007. All rights reserved.