

Sargeson, Nikki (Children and Younger Adults)

Subject: East Midlands Newsletter for the 2012 Games - June 2010

-----Original Message-----

From: Regional Coordinator [mailto:RegionalCoordinator@emd.org.uk]

Sent: 07 June 2010 12:42

Subject: East Midlands Newsletter for the 2012 Games - June 2010



East Midlands Newsletter for the 2012 Games

June 2010

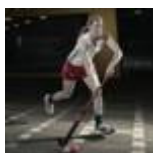
Welcome to the East Midlands newsletter, keeping you up to date with national, regional and local progress towards the London 2012 Olympic and Paralympic Games.



London 2012 outlines vision for Olympic Flame

LOCOG has announced that the Olympic Flame will arrive in the UK on Friday 18 May 2012 and will travel around the country for 70 days, arriving in London the weekend before the 2012 Games begin. 8,000 torch bearers will be selected, with a nomination process expected to be announced in May 2011.

[More info](#)



International hockey comes to Nottingham

The Samsung FIH Women's Champions Trophy, an international hockey event featuring six of the top teams in the world, including England, is being held at Highfields Sports Club in Nottingham on 10 - 18 July. The event, which is being staged in the UK for the first time and is supported by *emda*, will also host the Men's Four Nations Trophy, featuring Team GB.

[More info](#)



Loughborough University selected to host Team GB

Loughborough University has recently been selected as the Official Preparation Camp Headquarters for Team GB prior to the 2012 Games. In a video case study find out from Chris Earle, Director of Sport at the University, what the expected benefits from London 2012 and hosting the Japanese and British Pre Games Training Camps will be.

[More info](#)



Tour Series event to be held in Kettering

The Halfords Tour Series cycling event is coming to Kettering on 10th June. The event, supported by *emda*, will see the top 10 cycling teams in Britain compete around an hour long race of a 1.5km circuit starting at Market Place. Before the main event there will be children's races, coaching sessions and other fun activities designed to get people involved. [More info](#)



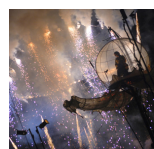
New tourism and 2012 Games inspired imagery unveiled

Following last year's successful launch of iconic photographs featuring current and aspiring Olympians and Paralympians at the region's tourism attractions, three new images have been unveiled by East Midlands Tourism (EMT), *emda*'s tourism arm. The new images can be viewed on the EMT website. [More info](#)



Get Set to meet the mascots

LOCOG has recently unveiled its mascots Wenlock and Mandeville. If your school or college is registered on the Get Set education programme you can enter a competition and be among the first to meet the mascots. More information about the mascots, including downloads for primary and secondary resources, can be found on the Get Set website. [More info](#)



SO Festival is Inspired by London 2012

The SO 2010 cultural festival in Skegness, organised by East Lindsey District Council, is one of the latest recipients of the Inspire mark. There are now 56 projects and events recognised by the Inspire programme in the East Midlands. More information about SO and the programme can be found in our regular Inspire newsletter. [More info](#)



Key sporting events in 2010

8 - 9 July [Derbyshire CCC v Australia](#)
10 - 18 July [Samsung FIH Women's Champions Trophy](#)
11 July [East Midlands Big Swim](#)
7 August [Outlaw Triathlon](#)
30 August [Skyride Leicester](#)
2 - 5 September [Land Rover Burghley Horse Trials](#)
3 October [The Run '10 Northampton](#)
3 October [Mablethorpe Marathon and Half Marathon](#)

[Find out more by visiting 2012.emda.org.uk](http://2012.emda.org.uk)

For all general queries regarding the Games in the region or to unsubscribe from this alert please email the Regional Coordinator at regionalcoordinator@emd.org.uk or call 0115 988 8307.



The information contained in this message is likely to be confidential and may be legally privileged. It is intended only for the person named as addressee. If you are not the intended recipient the dissemination, distribution, copying or disclosure of this message, or its contents, is strictly prohibited and may be unlawful unless authorised by *emda*. If you have received this message in

error, please immediately inform and return it to the sender at the above address, then delete the email. emda and its partners do not authorise any contract to be made using the Internet.

This e-mail has been scanned for all viruses by Star. The service is powered by MessageLabs.
